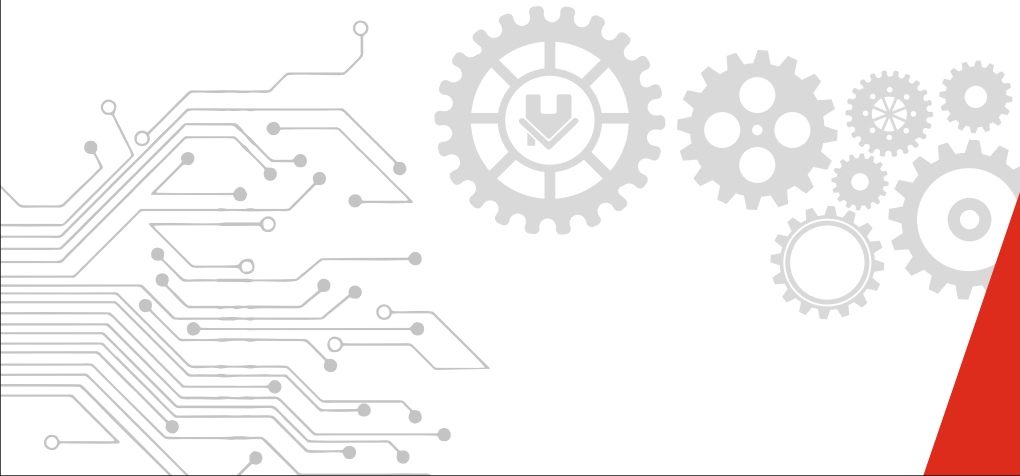
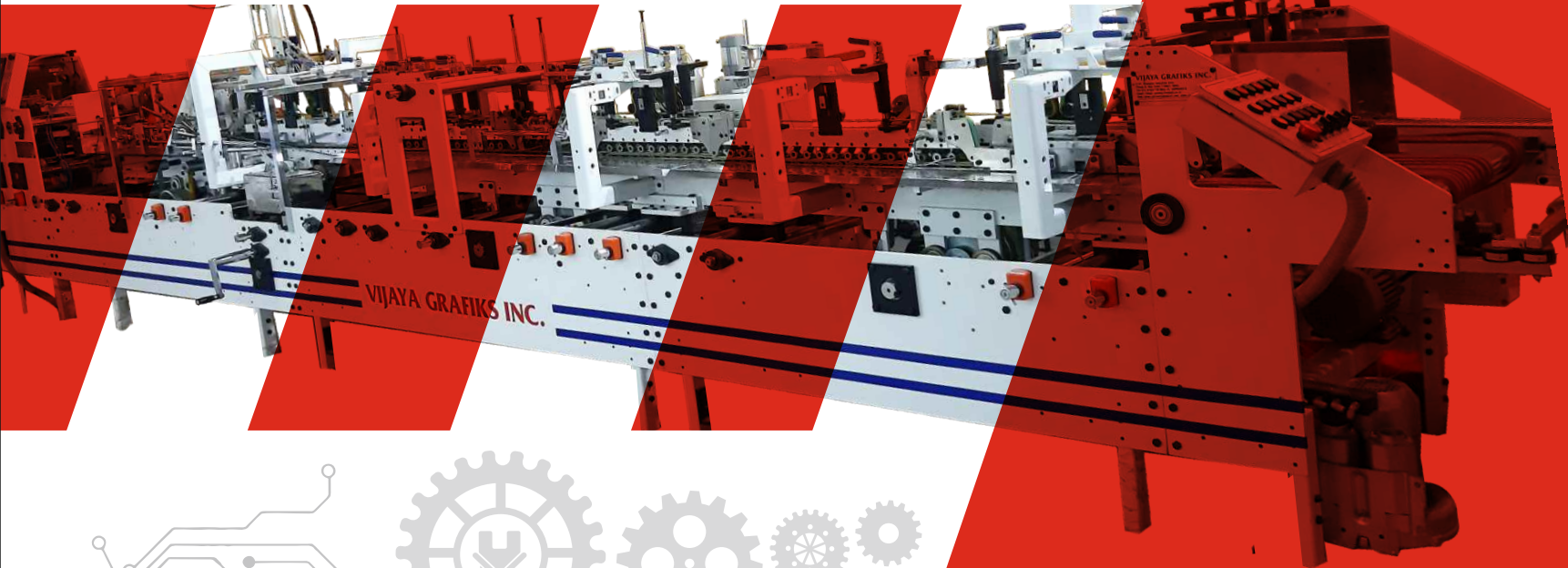


# VIJAYA<sup>®</sup>

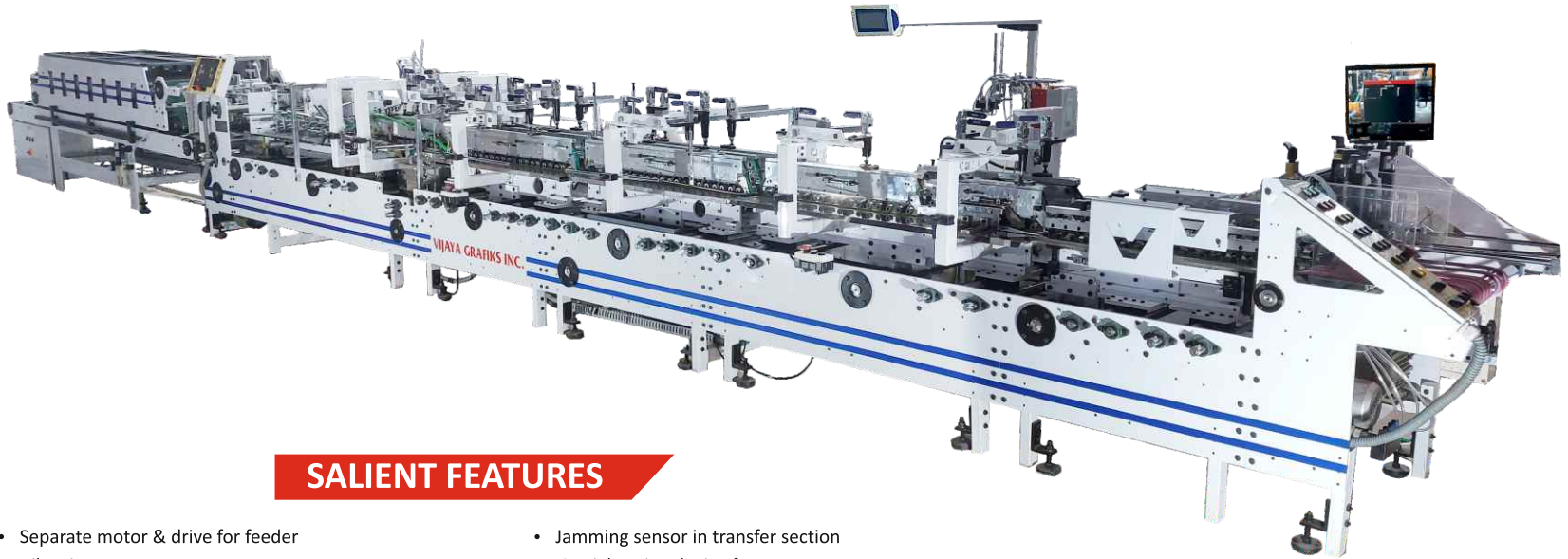
*Carton making Redefined...*



A STEP AHEAD  
**IN CARTON**  
ENGINEERING

# VIJAYA<sup>®</sup>

## A PERFECT CARTON FOLDER GLUER FOR LOCK BOTTOM CARTONS

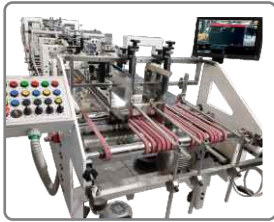


### SALIENT FEATURES

- Separate motor & drive for feeder
- Vibrating arm
- Position imaging system
- Suction feeder belt with pump
- Independent Pre-folding unit
- Internationally accepted Advanced technology pre-folding apparatus system
- Pre-folding by folding belt & rod
- Three Transport tracks in two units for lock bottom system
- Glue flap grinder
- A & B pin separate glue tanks
- Speed variator for final folding belts
- Collapsible centre bottom track in final folding
- Batch counter with pneumatic kicker
- Touch screen operated advance technology panel
- Jamming sensor in transfer section
- Straightening device for outer carton
- 4.6 mtr. Pneumatically pressure operated delivery pressing station
- Pneumatically operated carton holding cylinders in pressing station
- Start stop operation pressing station
- Compatible for duplex, triply cartons
- Cache cover folding gluing attachment
- Double wall carton folding gluing attachment
- Pop corn carton attachment
- All timing belts driven
- 12mm solid sheet, CNC machined frame
- Anti vibration mounted pads
- Stand for electronic gluing system
- 3 Nozzle electronic gluing system with touch screen control

### OPTIONAL FEATURES

- Plasma curing system
- Quality assurance system
- Braille embossing system
- Clapping device for corrugated cartons



### FEEDER

- Electronic vibrating arm, separate motor & VFD with suction feeding belts : The feeding unit with variable speed & suction is designed to allow appropriate space between the cartons even at a very high speed.



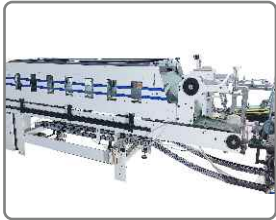
### PRE-FOLDING UNIT

- For smooth opening of the carton at the time of filling on an automatic filling / packing machine, the first and third crease can be pre-folded at 180° & 135° respectively. The unit is designed with side folding belt (Third crease) to avoid scratches on the cartons.
- Self adjustable transport tracks for duplex & E-fluted cartons



### FINAL FOLDING UNIT WITH SPEED VARIATOR

- High speed precision design helps in accurate folding of second and fourth crease after gluing
  - The speed variator device in final folding unit helps in varying the speed of side belts as per the requirement of carton dimension to prevent wastage and miss registration of carton at high speed.
  - The highly performing design of folding belts & runner which plays a vital role in final finishing at a high speed.
- Collapsible centre bottom track which can help to run smallest & the biggest carton without hassles



### PRESSURE DELIVERY

- Pneumatic operated pressure system
- 4.5 mtr length with 3.1 mtr of effective pressure.
- Separate motor for pressing station. The independent geared motor helps in increasing or decreasing the speed of unit. So that the different size of cartons comes between the pressure belts smoothly
- Upper conveyor can be moved forward and backward depending on the length of the carton.
- Optional Pneumatically operated carton holding system for outer carton cartons.



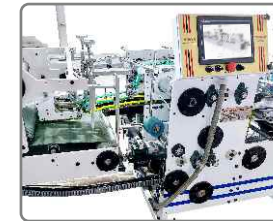
### ALIGNER UNIT FOR SIDE REGISTRATION

- Independent unit with an unparallel bottom tracks which guides the box to a parallel handrail to register eighter side according to requirement of the box



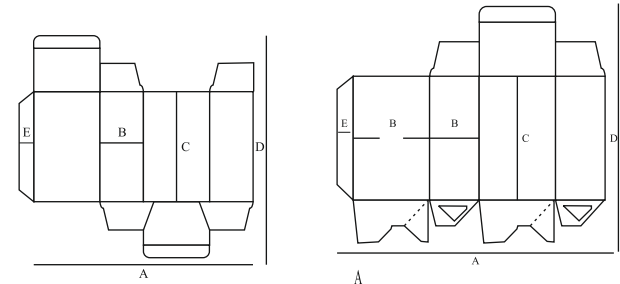
### LOCK BOTTOM UNIT

- For folding of all lock bottom flaps this unit is designed in three transport tracks in 2 units, so that the carton remains under pressure of all three tracks at the time of folding of flaps for lock bottom & four/six corner boxes.
- This prevents shifting or non alignment of cartons resulting to low wastage and increases production speed.
- Self adjustable transport tracks for duplex and E-flute cartons.



### TRANSFER SECTION

- It allows the carton to be transferred to pressure unit in regular, constant flow at any production speed.
- Straitening device used to correct the registration of outer cartons.
- Equipped with touch control screen for the operating of the machine.
- Batch counter equipped with electronic sensor and pneumatic kicker
- Optional clapping device used for corrugated cartons.
- Optional : Ejection for quality assurance system



Technical Specification of Machine			
Models	Power Required	Dimension	Max. Speed
VEENINE 65	12.5KW	1.3mtr X 12.5mtr	300 mtr/m
VEENINE 80	15KW	1.5mtr X 12.5mtr	300 mtr/m
VEENINE 102	15KW	1.7mtr X 12.5mtr	300 mtr/m

Technical Specification for STRAIGHT LINE CARTONS							
Models	A min.	A max.	B Min.	B Max.	C min	D Max.	E min
VEENINE 65	60mm	650mm	15mm	250mm	55mm	450mm	11mm
VEENINE 80	110mm	800mm	25mm	300mm	80mm	550mm	12mm
VEENINE 102	140mm	1020mm	50mm	400mm	120mm	700 mm	12mm

Technical Specification for LOCK BOTTOM CARTONS						
Models	A min.	A max.	B Min.	C Min.	D Max.	E min
VEENINE 65	140mm	650mm	32mm	90mm	450mm	11mm
VEENINE 80	140mm	800mm	32mm	130mm	550mm	12mm
VEENINE 102	160mm	1020mm	50mm	150mm	700mm	12mm

Note : Due to constant developments/upgradation, any information in this brochure is subject to change without notice



# VIJAYA<sup>®</sup>

## FOLDER GLUER FOR STRAIGHT LINE AND CRASH-LOCK BOTTOM CARTONS



### SALIENT FEATURES

- Variable speed with clutch in Feeder
- 130° & 180° Pre-Fold
- 3 Bottom Track & 5 Top Tracks
- Lockable top track holder handles
- High speed lock hooks
- Individual speed variable final folding belts
- A&B pin separate glue tank(Fully stainless steel)
- Gum flap Grinder
- Batch counter with pneumatic kicker
- VFD, PLC SYNC, HMI & push button operated panel
- Mechanical pressured pressing station (extended if required)
- Separate motor for Pressing station
- Compactable for duplex, met-pet, triply cartons
- CNC machined & powder coated solid frame
- Anti vibration padded legs
- All hardchrome alloy shafts
- Complete hardened bolts
- 3 Nozzle electronic gluing system with touch screen control

### OPTIONAL FEATURES

- Plasma curing system
- Quality assurance system
- Braille embossing system
- Clapping device for corrugated cartons
- Cache cover attachment
- Flip top carton attachment
- Double wall carton attachment
- Tube light carton attachment





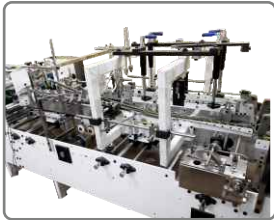
### FEEDER

- Variable speed driven: The feeding unit with variable drives designed to allow appropriate space between the cartons
- Electro magnetic feeder clutch system is to stop the feeder unit while the entire machine is running.



### PRE -FOLDING OR CRASH LOCK BOTTOM UNIT

- The first and third crease can be pre-folded at 180° & 135° respectively.
- For folding of all lock bottom flaps this unit is designed in three transport tracks in 2 units, so that the carton remains under pressure of all three tracks at the time of folding of flaps for lock bottom & four/six corner boxes.
- This prevents shifting or non alignment of cartons resulting to low wastage and increases production speed.
- Self adjustable transport tracks for duplex and E-flute cartons.



### FINAL FOLDING UNIT WITH SPEED VARIATOR

- The folding of second and fourth crease after gluing process.
- The highly performing design of folding belts & runner which plays a vital role in final finishing at a high speed.
- Variable speed of final folding belts
- The side lay belt speed can be varied by speed variator knob.
- Optional collapsible centre bottom track.



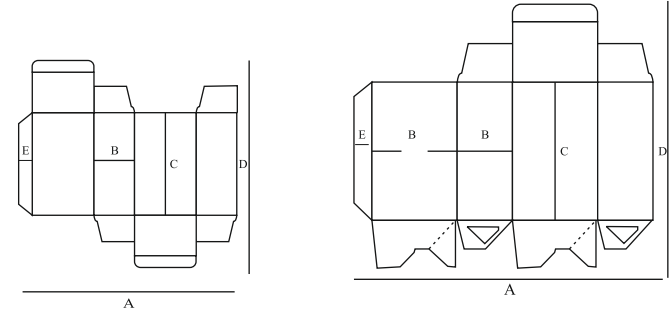
### TRANSFER SECTION

- It allows the carton to be transferred to pressure unit in regular, constant flow at any production speed.
- Equipped with push button control for the operating of the machine.
- Batch counter equipped with electronic sensor and pneumatic kicker.
- Optional Straightening device used to correct the registration of outer cartons.
- Optional clapping device used for corrugated cartons.



### PRESSURE DELIVERY

- 3.7mtr length with 2.5 mtr length effective pressing station
- Separate motor for pressing station. The independent geared motor helps in increasing or decreasing the speed of unit. So that the different size (Duplex or Triply) of cartons comes between the pressure belts smoothly
- The finished carton comes under a pressure rollers & get cured.



Technical Specification of Machine			
Models	Power Required	Dimension	Max. Speed
VIJAYA 65	8 KW	1.2mtr X 8.6mtr	200 mtr/m
VIJAYA 80	10 KW	1.4mtr X 9mtr	200 mtr/m
VIJAYA 100	12 KW	1.6mtr X 9.5mtr	200 mtr/m

Technical Specification for STRAIGHT LINE CARTONS							
Models	A min.	A max.	B Min.	B Max.	C min	D Max.	E min
VIJAYA 65	60mm	650mm	15mm	250mm	55mm	450mm	11mm
VIJAYA 80	110 mm	800mm	25mm	300mm	80mm	550mm	12mm
VIJAYA 102	140mm	1020mm	30mm	400mm	120mm	700mm	12mm

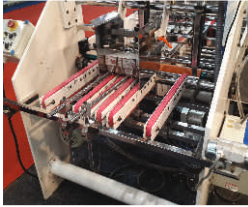
Technical Specification for LOCK BOTTOM CARTONS							
Models	A min.	A max.	B Min.	C min	D Max.	E min	
VIJAYA 65	140mm	650mm	32mm	130mm	450mm	11mm	
VIJAYA 80	140mm	800mm	32mm	130mm	550mm	12mm	
VIJAYA 102	160mm	1020mm	50mm	150mm	700mm	12mm	

Note : Due to constant developments/upgradation, any information in this brochure is subject to change without notice

**VIJAYA<sup>®</sup>**

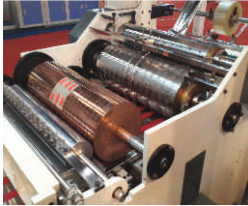
**WINDOW PATCHER  
WITH LINER CARTON ATTACHMENT**





### FEEDER

- Friction feeder equipped with vibrating motor helps in free flow of cartons from the pile. This feeder offers highest flexibility with regard to any blank shapes, suitable for both card board and corrugated material.
- Vacuum feeding belt system
- Servo driven feeder



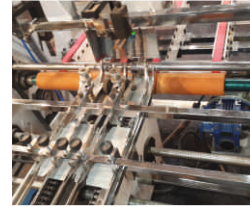
### GLUING & SUCTION CYLINDER

- Sliding of glue unit ensures easy removal of adhesive and cleaning process is less time consuming. Suction belts holds the carton firmly for accurate synchronization of glue impression and film/liner material on the carton. Rotary cutter cuts the material & transfers through vacuum transfer cylinder.



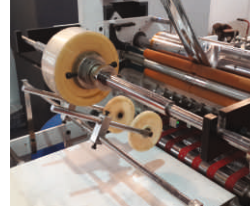
### TENSION CONTROLLER

- Automatic controller with braking controls the tension of reel, ensures smooth unwind of reel at high speed



### POSITIONING ROLLER & CHAIN STATION

- This roller maintains the gape between the cartons uniformly even at higher speed. It coordinates free flow of cartons without wastage between the feeder and squaring chain station. This cartons move uniformly maintaining the accurate gape in between. It also positions and square the cartons accordingly.



### COLLECTING STATION

- Easy accessible delivery belts ensures stream delivery which also counts and batches the cartons as desired.



### OPERATING STATION

- Touch screen operating panel is user friendly and helps in easy operation of the machine.



## Window Patching Machine

Technical Specification		
Blank Length	Minimum 100mm	Maximum 550mm
Blank Width	90mm	550mm
Window Film Length	40mm	450mm
Window Film Width	30mm	400mm
Liner width	60mm	250mm
Film Thickness	0.05mm	0.3mm
<b>MATERIAL CALIPER (paper and cardboard)</b>	220 g/m <sup>2</sup> to 600g/m <sup>2</sup>	
Power Required	Max. 15kw	
Dimension of the Machine	5 mtr x 1.3 mtr width	
Foil/Liner Reel Diameter Inner/Outer	Inner---- 76mm Outer --- 500mm	
<b>OUTPUT LINER STATION</b>		
Blank length below 370mm	12000 pcs/Hour	
Blank length above 370mm	6000 pcs/Hour	
<b>OUTPUT WINDOW PATCHING</b>		
Blank length below 370mm	15000 pcs/Hour	
Blank length above 370mm	7500 pcs/Hour	
Accuracy tolerance	(+/-) 1mm	

Note : Due to constant developments/upgradation, any information in this brochure is subject to change without notice



# VIJAYA<sup>®</sup>

## AUTOMATIC CARTON ERECTING MACHINE CLAM SHELL MACHINE



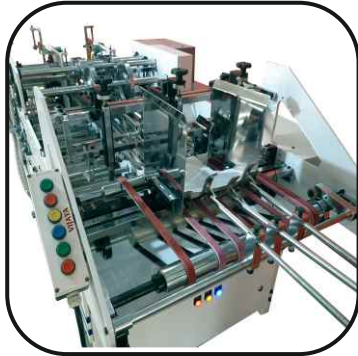
### Machine brief details

- 1) It is an Indigenous equipment to produce paper box such as
  - Hamburger box
  - Four corner trays
  - Sweet Box
  - French Fries
  - Meal box etc.....
- 2) With Firm structure, high quality, high efficiency.
- 3) Hot Melt Adhesive application system on the machine as per customer requirement

### Detailed specifications

- Servo paper feeding unit
- Registration unit
- Gluing unit
- Totalizer counter
- Forming unit
- Collecting unit

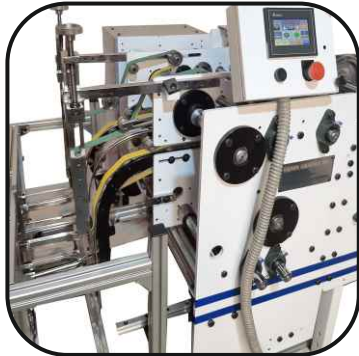




**Servo Drive Feeder**



**Chain station**



**Touch screen operated & servo driven erecting unit**



**Easy adjustable collecting unit**

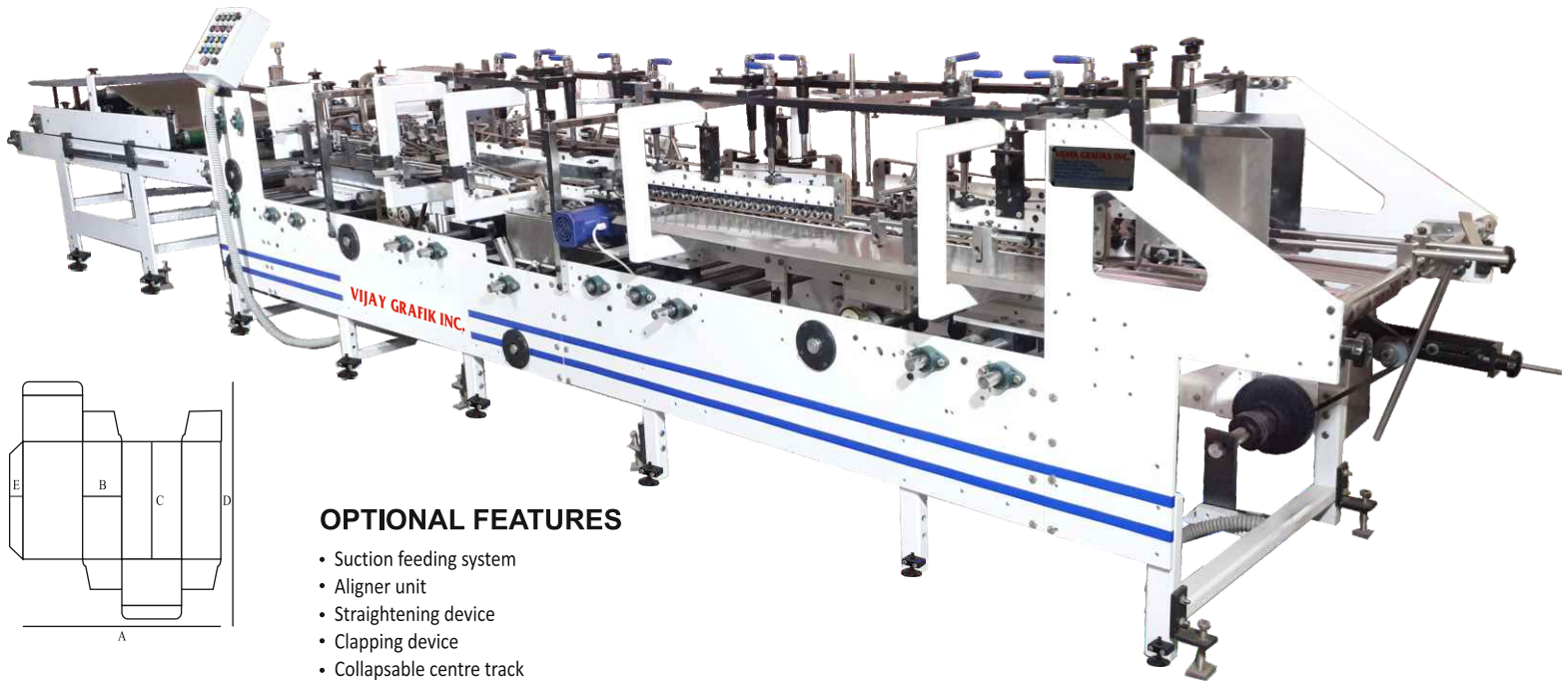
## Technical Specifications

Suitable Material	200-600GSM (White card board, PE Coated Paper, Craft Paper, Corrugated Paper Thickness - Max1.5mm)							
Production Speed	60-160pcs / min (Different paper box shapes, the speed is different)							
Blank Paper Size	Lenght		Width		Height		Angle / Conicity	
	Min.	Max.	Min.	Max.	Min.	Max.	Min.	Max.
	100mm	500mm	100mm	550mm	15mm	200mm	5°	40°
Blank paper size	Max. 1.5mm for corrugated paper							
Total Power	5.5 KW							
Electrical Specification	Servo motor/AC motor & VFD PLC, HMI & touch screen operated panel							
Total Weight	1800kgs approx.							
Machine Dimension	Width 1400mm x Length 3600mm x Height 1250mm							



Note : Due to constant developments/upgradation, any information in this brochure is subject to change without notice

*With or Without Pre-Folding Unit*



### OPTIONAL FEATURES

- Suction feeding system
- Aligner unit
- Straightening device
- Clapping device
- Collapsible centre track
- Pre pressing system

### SALIENT FEATURES

- Maximum speed 200mtr / min
- Easy to operate
- AC variable frequency drive
- Less change over time
- Feeder electro-magnetic clutch
- Totalizer & batch counter

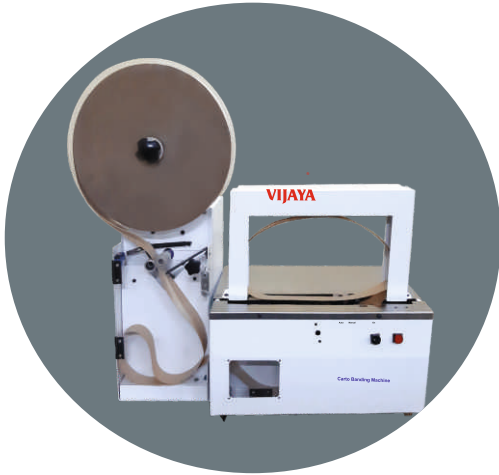
### SPECIAL PURPOSE MACHINE

- Sleeve pasting machines for match box, sharpner chewing gum boxes etc.
- Tube light carton attachment

Technical Specification of Machine				Technical Specification for STRAIGHT LINE CARTONS							
Models	Power Required	MFG M/C Dimension	Prefold M/C Dimension	Max. Speed	A min.	A max.	B Min.	B Max.	C min	D Max.	E min
VIJAYA 80	7.5 KW	1.3mtr X 7mtr	1.3mtr X 9mtr	200 mtr/m	110 mm	800mm	25mm	300mm	80mm	550mm	12mm
VIJAYA 102	10 KW	1.4mtr X 7.5mtr	1.4mtr X 9mtr	200 mtr/m	140mm	1020mm	30mm	400mm	120mm	700mm	12mm

Note : Due to constant developments/upgradation, any information in this brochure is subject to change without notice





## CARTON BANDING MACHINE

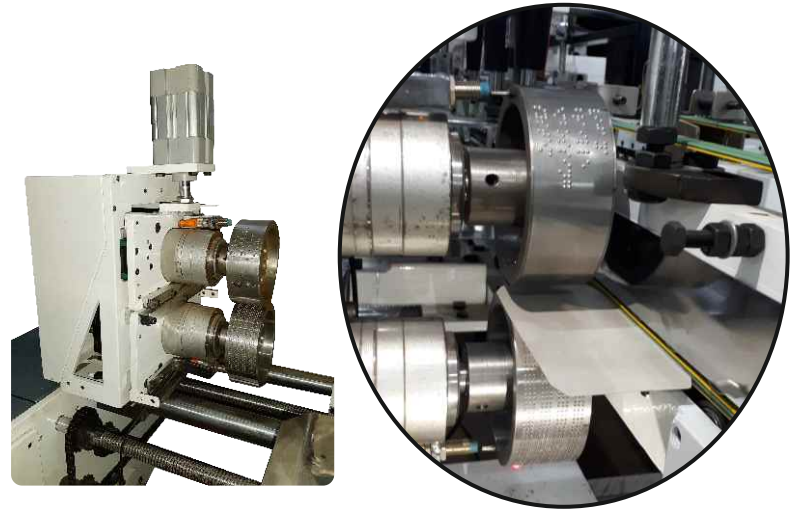
### SPECIFICATION

- Tape type: Paper or plastic tape
- Tape width : 20mm or 30mm or 40mm

#### **Banding capability:**

- For Paper tape : Banding width : 270mm (20/30/40mm width tape)  
Banding height : 270mm (20/30/40mm width tape]
- For Plastic tape: Banding width : 270mm (20/30/40mm width tape)  
Banding height : 270mm (20/30/40mm width tape]
- Tape length : 600mm
- Banding speed : 20 - times/Minute
- Power supply : 220/230v 50/60Hz 1 Phase
- Machine weight : 38kg
- Machine Dimension (L/W/H): 730X300X725mm

Note : Due to constant developments/upgradation, any information in this brochure is subject to change without notice



## BRAILLE EMBOSSING SYSTEM

### SPECIFICATION

#### **Braille Four lines**

- Carton length Min - 60mm
- Offset length Min - 20mm
- Offset length Max - 60mm

#### **Braille Embossing length :**

- Single Carton per Rotation Max : 180mm
- Double Carton per Rotation Max : 90mm
- Distance between 2 Cartons Min : 30mm
- Electrical Consumption : 3kw
- Paper Board gsm: Min : 200gsm  
: Max : 400gsm

# VIJAYA<sup>®</sup>



# WE ADD VALUE TO YOUR BUSINESS



## VIJAYA GRAFIKS INC

**Office :** F-71, Mayapuri Industrial Area,  
Phase-II, New Delhi-110064 India.

**Tel. :** 011-41847729

**Works :** J-72, Site - 5, UPSIDC Indl. Area, Kasna,  
Greater Noida - 201306 (UP)

**Aftersale Support :** 9899924379

[vijayagrafiksinc@gmail.com](mailto:vijayagrafiksinc@gmail.com)

[vijaya\\_pacmac@yahoo.co.in](mailto:vijaya_pacmac@yahoo.co.in)

[www.vijaya.co](http://www.vijaya.co) / [www.cartonfoldergluer.in](http://www.cartonfoldergluer.in)



MAKE IN INDIA